




valeriã

A *petal* SERIES PROJECT

SMART RESIDENCES  
@ AZAD MARG, C-SCHEME  
JAIPUR



We want to live at a premium location that has access to unlimited amenities like parks, gyms, market etc., but don't want to be burdened by over loaded facilities which we may not use. While buying an apartment in a complex with end no. of facilities we end up paying a much higher cost price and also higher costs of maintenance of living in such a project during the lifetime of the project.

Concept of petals is designed to address the needs of people who do not wish to compromise on quality of living but also not burden themselves with the tantrums that come in the package of living in an overloaded project in a big society.

#### About the Petal Series Project –

**Trimurty Petal Series Homes are luxurious apartments with various high-quality specifications in the heart of Jaipur City–**

- Compact Boutique Apartments
- Designed on Green Building Principles
- Old age, Child and Specially-abled Friendly
- Automated Security and Access Controls
- Solar Power
- Automated Irrigation
- Gym and Community gathering Spaces
- Limited no. of Apartments
- Minimum Super Area
- Cycle Stand
- Electric Charging points in parking
- Provision for lighting points for wardrobes and overhead kitchen cabinets.
- Video Door Phone
- Intercom
- Permanent exterior finishes
- Children play area
- Panic alarm



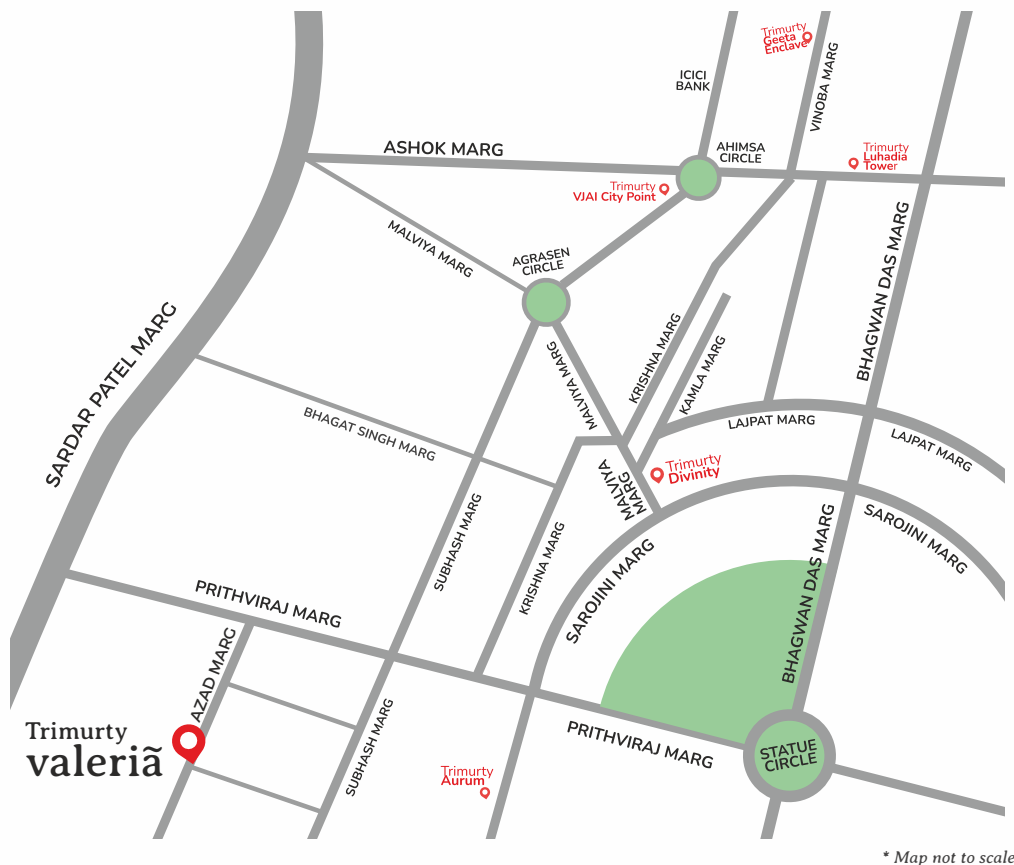
Hand crafted  
**homes**

*made of art, heart & nature.  
Homes fit for real life.*

Large scale housing is often void of character, detailing and customization.  
Keeping all this in mind, presenting **valeria**, a **petal series project**,  
hallmark by Trimurty experience.







## An address that speaks for itself

The lifestyle that you've chosen for yourself and your family deserves nothing less than a posh location that caters to it every day.

Your home at **valeria** is perfectly placed to enjoy the laid-back lifestyle you truly deserve.

Located just a hop away from the famous Statue Circle, markets, restaurants, educational institutions, hospitals, your home here comes inclusive of all the exclusive privileges! Dwell among the majestic residential and commercial areas that are well connected to all other parts of Jaipur including the old city and has a well-developed civic infrastructure with wide roads, free spaces, and good drainage systems.

There's grandiose in the air of C-Scheme that is rooted in privileges. It is a location for those who admire splendor, magnificence, and exclusivity.

And you're one of them!

# Home is where you feel *safest*

You truly feel at home when you feel the safest. Staying in or going out, the features and facilities in these apartments will make sure you feel safe and secure about your home always.

Artistic impression of your 13'-0 $\frac{3}{4}$ " X 16'-7 $\frac{1}{2}$ " Living Room@valeria





Artistic impression of your 13'-10½"X10'-10½" Dining Hall @valeria



Artistic impression of your 13'-6" X 9'-0" Modular Kitchen @valeria



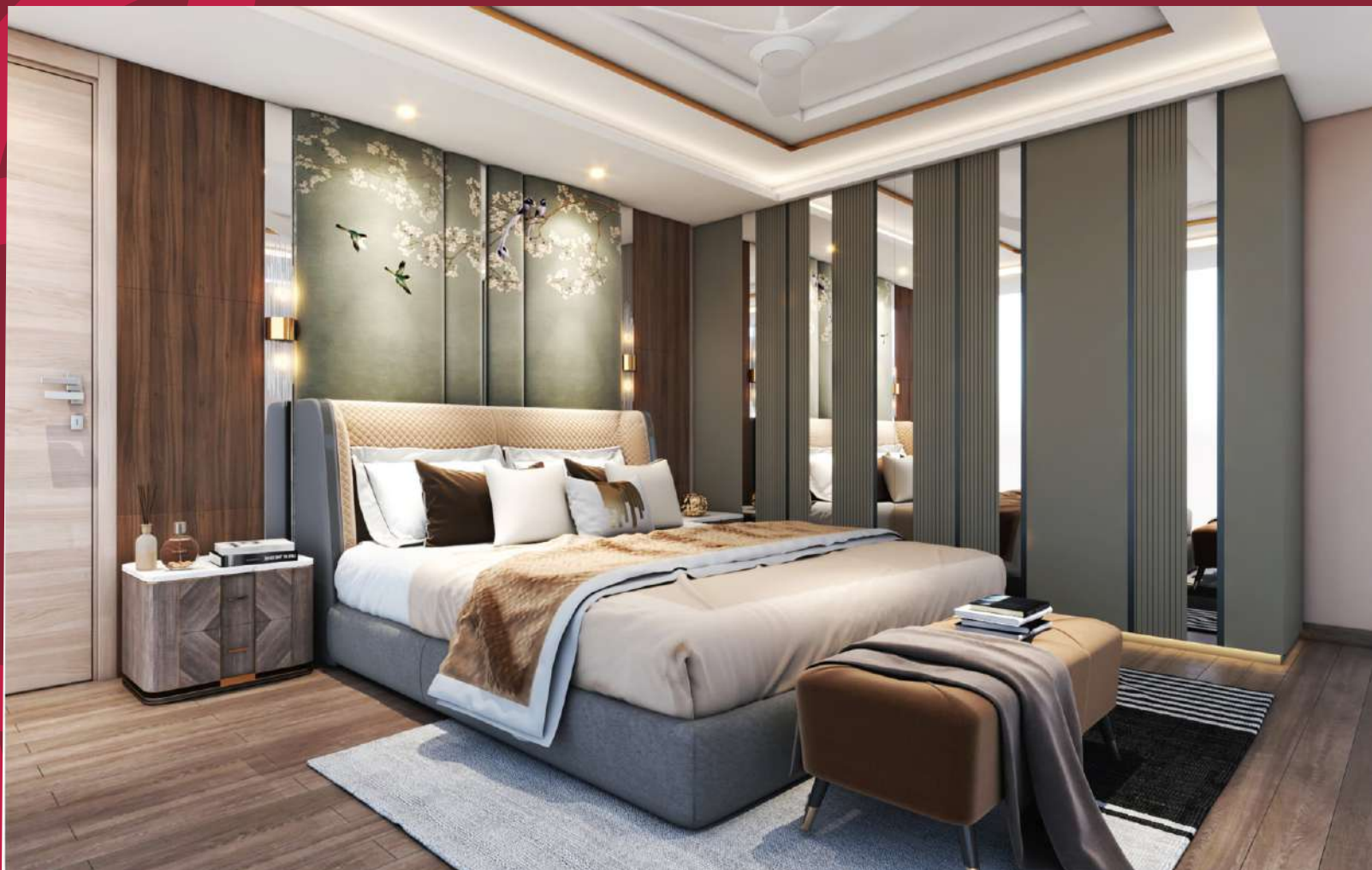


Artistic impression of your 12'-7½" X 12'-0" Bedroom @valeria



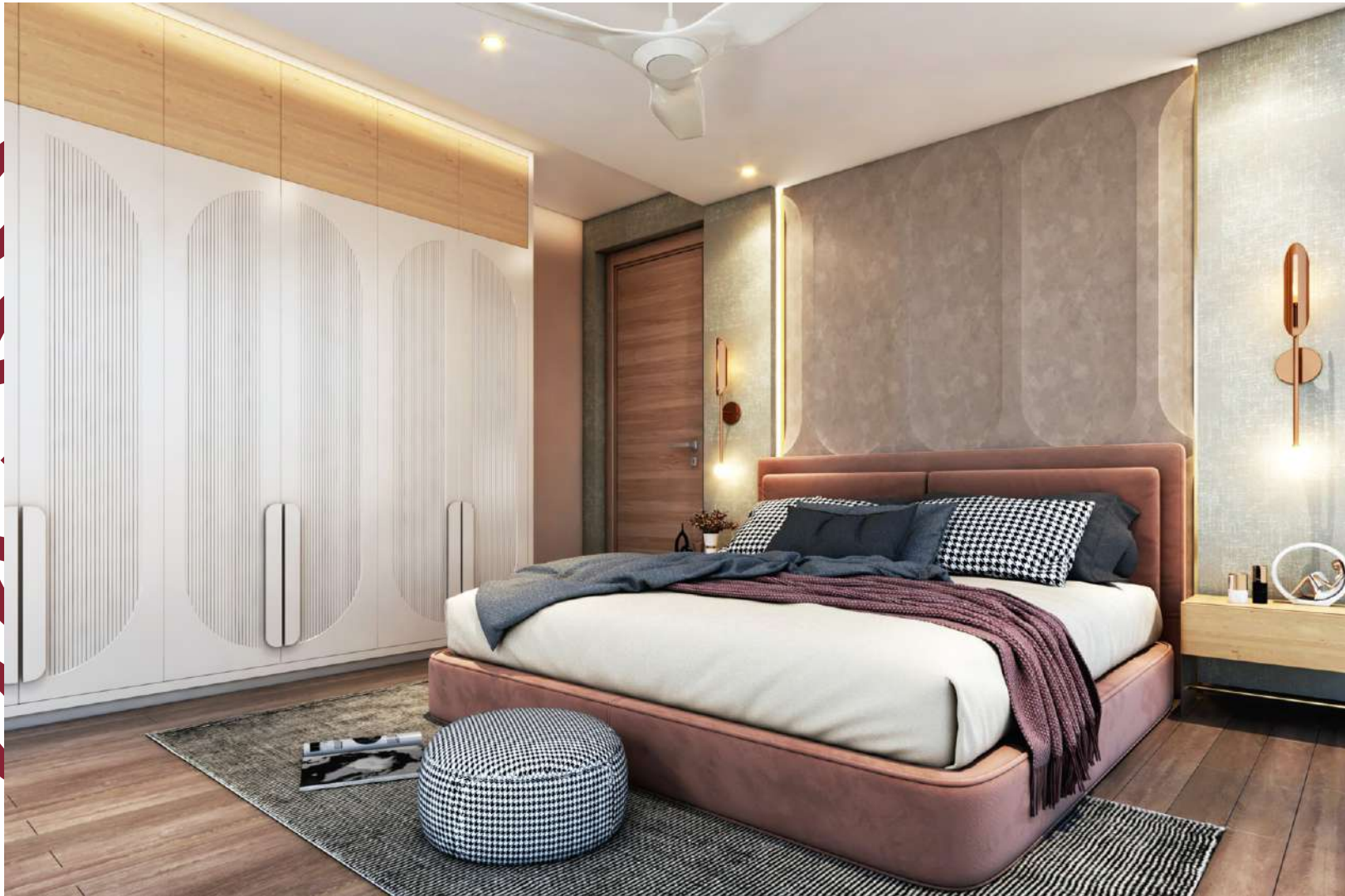


Artistic impression of your 12'-9" X 15'-7½" Bedroom @valeria



Artistic impression of your 12'-10½" x 16'-1½" Bedroom @valeria





Artistic impression of your 13'-1½" X 12'-6" Bedroom @valeria

Selection of the right material makes all the difference.  
Like all our premium projects, the *petal series* also uses  
the best of carefully selected materials.





## Specifications:

### *Facade*

Permanent Brick Facade

### *Structure:*

Earthquake resistant RCC frame structure.

### *Air-conditioning:*

VRV Air-conditioning

### *Drawing, Dining & Passage*

Floor, Walls & Ceiling Imported marble flooring / Gypsum plaster / Cove design / Plastic emulsion paint.

### *Bed Rooms*

Laminated Wooden Flooring

### *Bathrooms*

Premium C.P fittings and sanitary ware

### *Kitchen*

Modular Kitchen

Tiled flooring and dado / Gypsum plaster /Plastic emulsion paint.

### *Balconies*

Anti-skid ceramic tiles

Walls with cement plaster and plastic emulsion paint.

### *Doors & windows*

Entrance/External Doors & Windows

Seasoned hard wood frame & premium laminated flush doors with melamine polished wooden frames.

Aluminium/UPVC with heat reflective glass on external side for energy saving.



*Our mission is simple,*

- high quality homes for the selected few*
- to make homes worth living.*

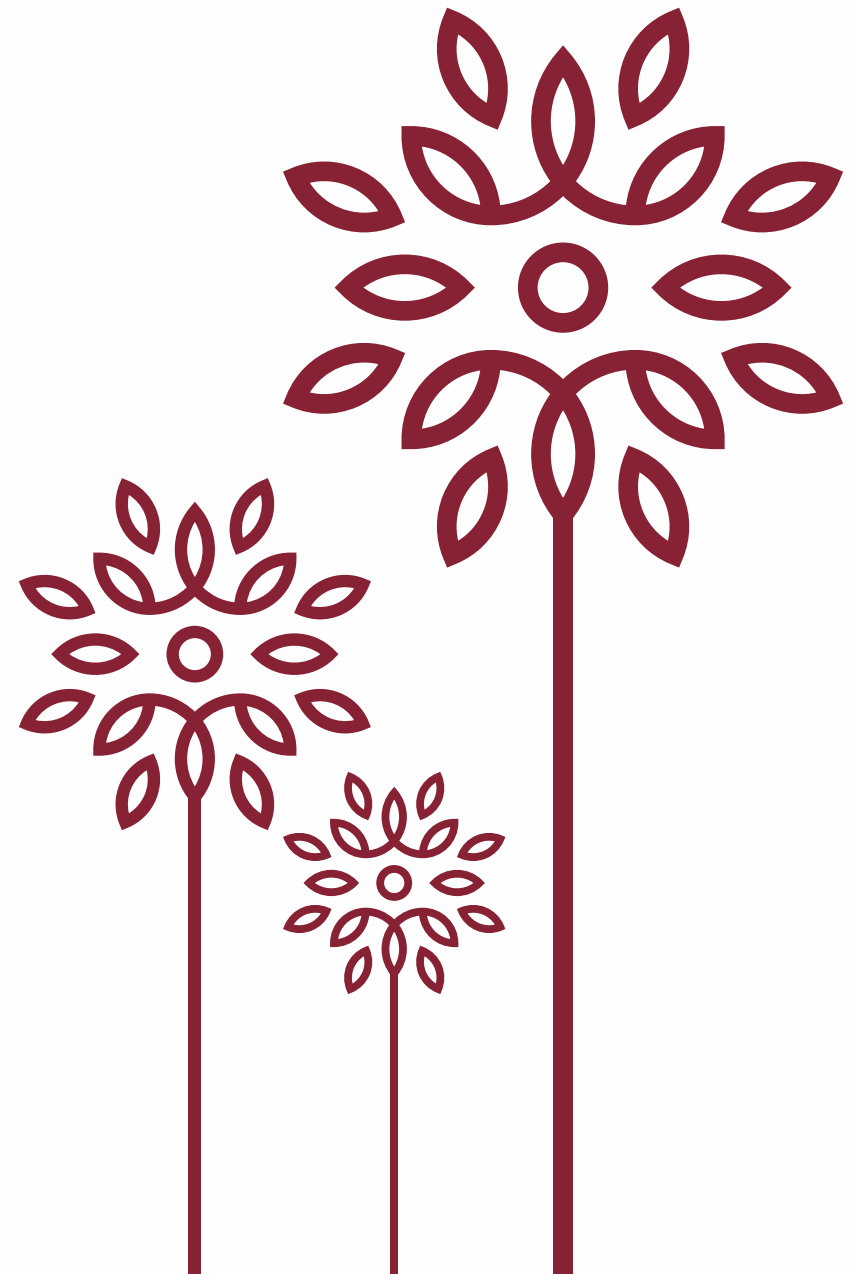
- High Quality*
- Excellent Design*
- Timely Delivery*
- Hassle Free Living*

At the heart of our project, there is a connection with nature.

All our new projects are designed on green building principles.

Preservation of Urban Biodiversity and Sustainability are at core of our design.

Breathe easy and feel better in homes made by Trimurty.

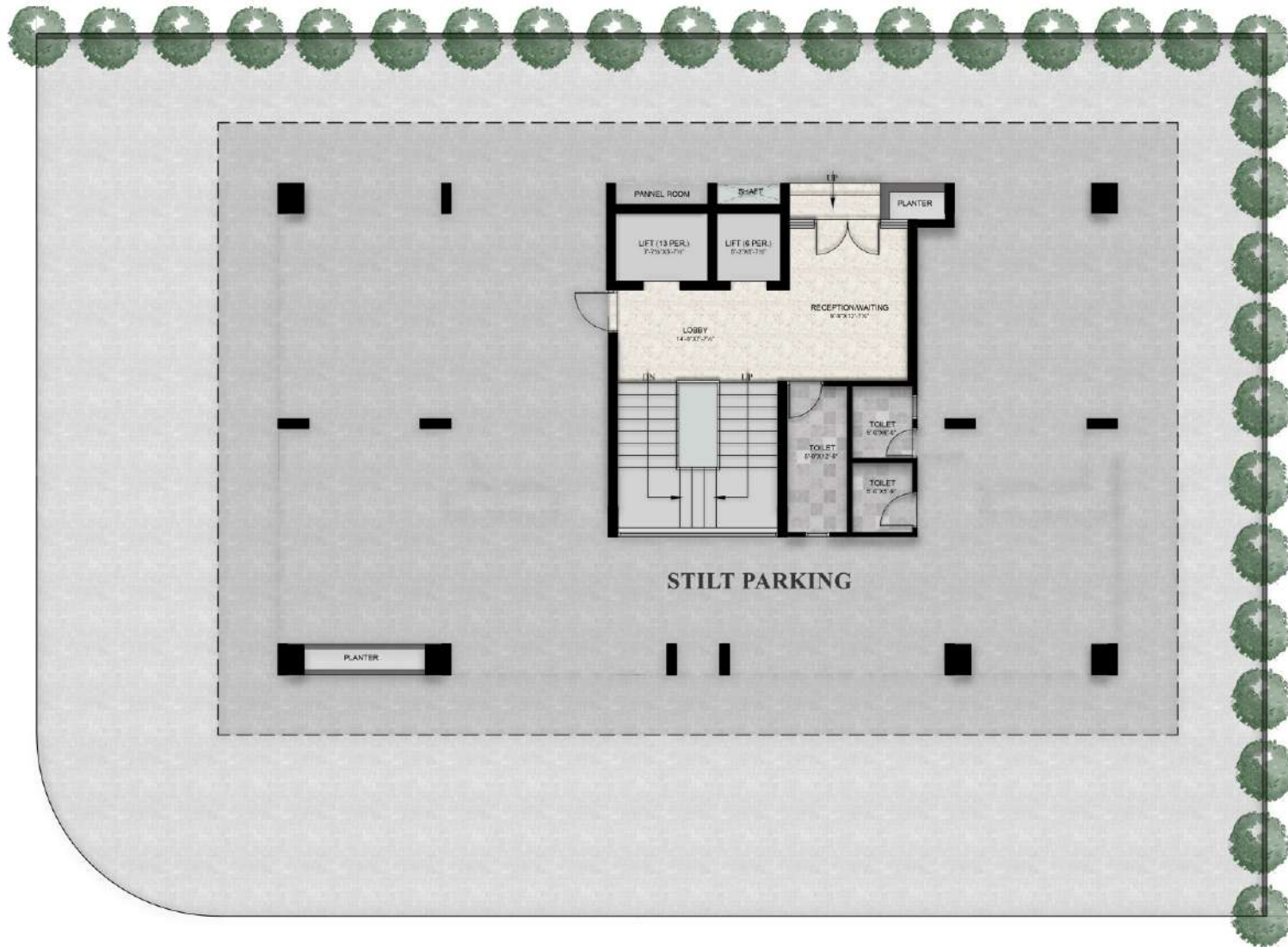








AZAD MARG



GAUTAM MARG

*stilt floor plan*



\*(parking layout is subject to change as per approval.)



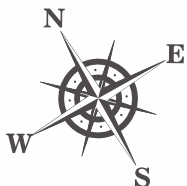
FLAT NO.	CARPET AREA SQ.FT.	BALCONY AREA SQ.FT.	WALL AREA SQ.FT.	BUILT UP AREA SQ.FT.	SALABLE AREA SQ.FT.
101	1526.25	169.50	109.25	1805.00	2346.50
102	1526.25	169.50	109.25	1805.00	2346.50
TOTAL	3052.50	339.00	218.50	3610.00	4693.00



*typical floor plan*  
1<sup>st</sup>, 2<sup>nd</sup>, 3<sup>rd</sup>, 4<sup>th</sup> & 6<sup>th</sup> floor

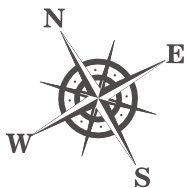
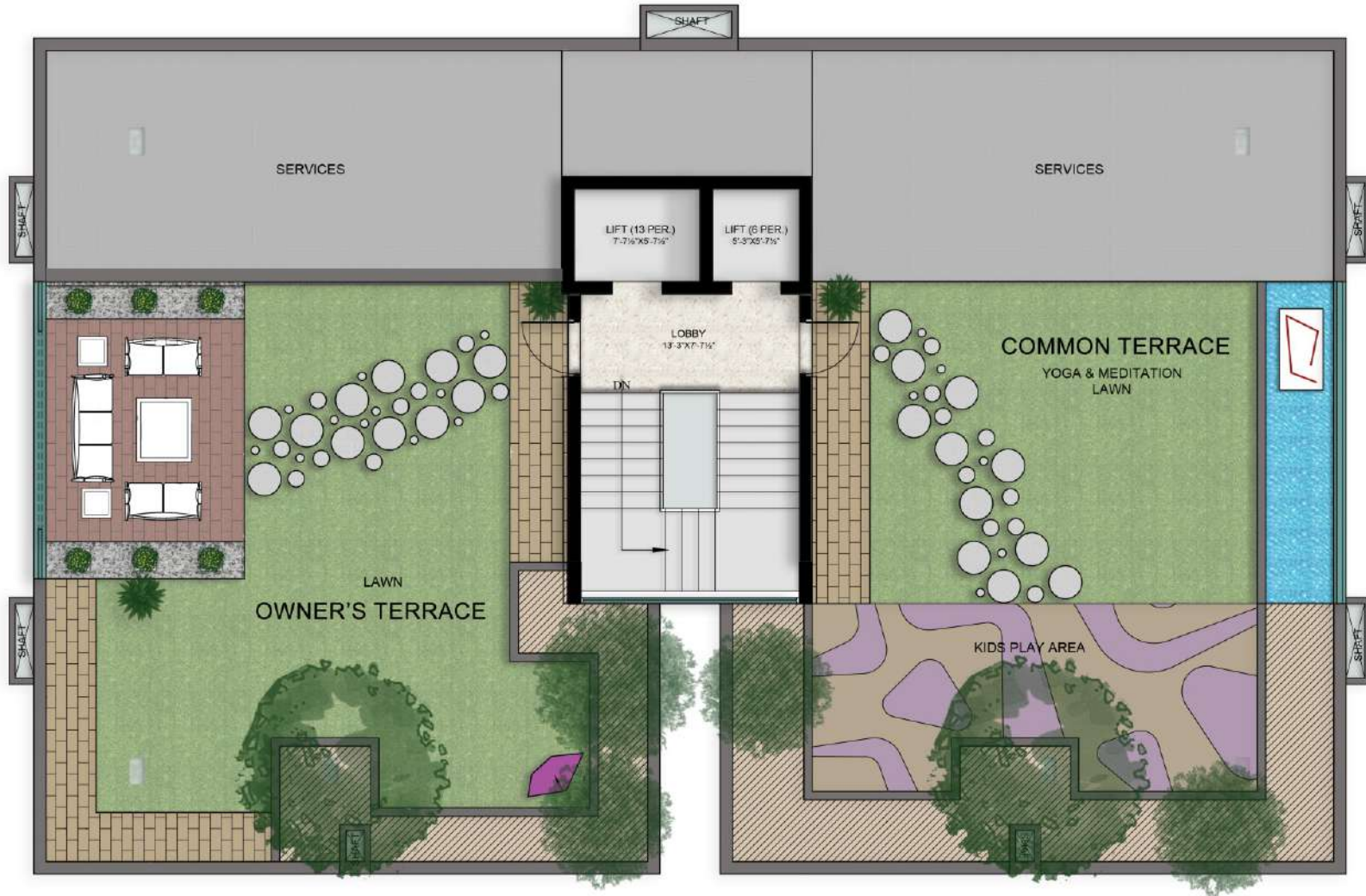


FLAT NO.	CARPET AREA SQ.FT.	BALCONY AREA SQ.FT.	WALL AREA SQ.FT.	BUILT UP AREA SQ.FT.	SALABLE AREA SQ.FT.
501	1526.25	169.50	109.25	1805.00	2346.50
502	1526.25	169.50	109.25	1805.00	2346.50
TOTAL	3052.50	339.00	218.50	3610.00	4693.00



5th floor plan



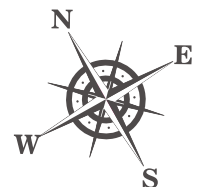


*terrace floor plan*





*basement floor plan*



# Improving Life Efficiency & Urban Bio-Diversity by *Trimurty*

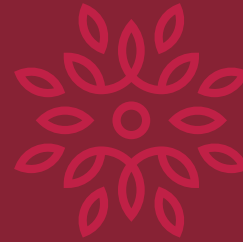
Trimurty, of late, has been receiving accolades at national level platforms. It is all because of the initiatives and adherence to ecologically-sensitive work ethos. It has acknowledged a new force to an improved quality of life by going beyond the generic applications of green plants and landscaping.

We have been encouraging residents to adopt Nest Boxes within their premises. Birds are indicators of urban life. Gifting Nest Boxes and Feed Boxes has become our conservation-cult.

Lend a hand to create a better environment. You are welcome to pick up a Nest Box from our office and fix it at home to improve quality of life. We shall love to have more participating citizens in this drive to make Jaipur the best environmental friendly urban scape.

Another focus we dwell on is the selection of trees, shrubs, and bush species. They need to be home-grown or native, so as not to utilize excessive water and provide optimum benefits. Numerous consequential benefits are received by residents when such aspects are adapted.

"Trimurty's urban bio-diversity conservation initiative in Jaipur is a new benefit to home owners."





Known for quality construction, superb architectural design and usage of latest materials and concepts in its projects, Trimurty Colonizers and Builders Pvt. Ltd. started its first project, the Trimurty Apartments in the year 1995, patently dictating the intentions of Mr. Udai Kant Mishra by creating a land mark in the history of apartment dwelling in Jaipur.

Today, the company has gone a long way and stretched its wings to townships, hospitality and education. Some of its successful projects in Jaipur are: Trimurty Apartments; Trimurty's Ariana, Trimurty Aurum, Trimurty's Dave Apartments, Trimurty's City Point, The Fern - An Ecotel Hotel, The Wallstreet - A Business Hotel and UIMS; to name a few.

A few of our recent projects at a glance...



TRIMURTY  
DIVINITY  
दिव्य

3 & 4 BHK Premium  
Residential Homes

C-33, Malviya Marg  
C-Scheme, Jaipur 302001



THE FERN HOTEL



THE WALLSTREET HOTEL



GEETA GLOBAL SCHOOL



**valeriã**

A *petal* SERIES PROJECT

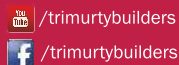
SMART RESIDENCES  
@ AZAD MARG, C-SCHEME  
JAIPUR

RERA REG. No.: RAJ/P/2022/1926  
[www.rera.rajasthan.gov.in](http://www.rera.rajasthan.gov.in)



**Hallmark in Ambient Living**

601, Geeta Enclave, G-8, Vinoba Marg,  
C-Scheme, Jaipur 302 001, Tel.: 01414002160  
Email: [sales@trimurty.com](mailto:sales@trimurty.com)



MEMBER OF  
**CREDAI**  
Confederation of Real Estate  
Developers' Associations of India

Legal Disclaimer: The disclaimer provided here in form are part of the information given in this brochure. While every reasonable care is taken by the company to ensure that information in the brochure are accurate, the owner or agents cannot be held responsible for any inaccuracies, shown in the brochure. Images generated on this brochure are artist's impression and serve only to give an approximate idea of the project. All impression and plans are subject to amendment, as may be required for the betterment of the project allowed within the laws.

Call Us: +91 9509500800