

RERA Registration No.
RAJ/P/2017/017

TRIMURTY'S
ARIANA
LIVE LAVISH

2 BHK/3 BHK/3 BHK Duplex/4 BHK
Premium Residential Apartments
at Ramnagar, Jagatpura



LIVE LAVISH

...because that's how we have designed Ariana

Ariana is an exceptionally designed residential community. Your home at Ariana will be large and rooms spacious. And we have very thoughtfully put together a number of facilities and features to ensure that you live your life to the fullest.

For the first time in Jagatpura get the feel of a Bungalow in a Duplex Flat.



10 REASONS why Ariana is your Top Choice



1. Ariana is a project from the house of Trimurty
2. Ariana is Value-for-Money – for all its features & facilities, it is surprisingly competitively priced
3. It is a truly Premium Project – check out the large unit sizes & big, open spaces
4. Trimurty means Quality – we deliver what we say
5. Live Better, Live Lavish – live in a greener and healthier environment
6. Ariana is a Pre-Certified Platinum Rated Green Building—this means better quality of life & low maintenance costs
7. Superb Features – best in class features & amenities within the gated environment
8. Well-developed Neighbourhood – all facilities within 5-6 km of Ariana
9. Ariana comes with the promise of Excellent Maintenance – carried out by professional companies
10. See for yourself – Trimurty's past projects are evidence to our claim

...because it doesn't cost you the earth

A residential option is usually either premium (that comes for a premium price) or just ordinary. Not fair! At Ariana, you get all the conveniences and essentials of lavish living... for a very competitive price.



A Project Par Excellence



- Grand entrance lobbies
- Glass railings
- Professional building maintenance services
- Central DTH Connection
- Landscaped open areas with sitting places, pedestrian pathways
- Servant & Driver facilities within the campus
- 12ft high (floor to floor) stilt floor for that grand look that you expect

Live Life to the Fullest

- Over 25,000 sq.ft. of theme based landscaped greens
- Over 10,000 sq.ft. of Community and Club areas
- Community/Party Hall
- Water bodies
- 74% open space
- Community terraces
- More than 11 games and play facility within the complex
- Library
- 100' long swimming pool with grand infinity edge



Ariana Conceptual Landscape Plan



1. Entrance Court

- Ramp Down
- Ramp Up
- Car Wash Area
- Commercial Entry Plaza

2. The Oasis(Pool Area)

3. Central Green

- Kids Play Area/Sand Pit
- Play Court
- Half Basketball Court
- Party Lawn

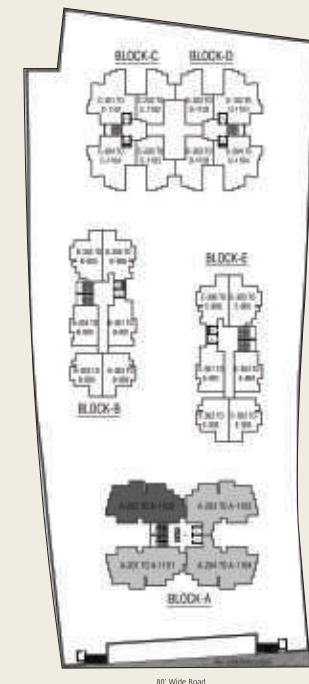
4. The Club

- Steam & Sauna
- Sports Hall
- Games Room
- Home Theater
- Tv Lounge
- Cafe
- Library & Business Centre
- Multipurpose Hall

4 BHK Unit Plan with Servant Room

Block A

Typical Floor (2nd to 11th Floor)



Key Plan

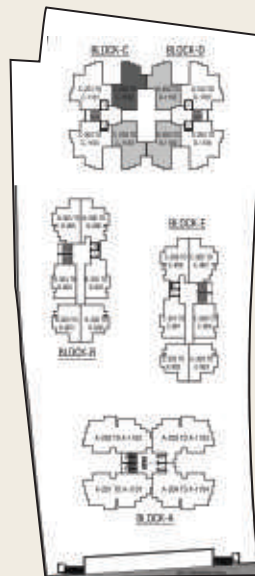
Carpet Area(sq.ft)	Wall Area(sq.ft)	Balcony Area(sq.ft)	Builtup Area(sq.ft)	Super Builtup Area(sq.ft)
1588.75	110.44	218.93	1918.12	2474.37

Blocks C & D

2 BHK Unit Plan



Typical Floor (2nd to 11th Floor)



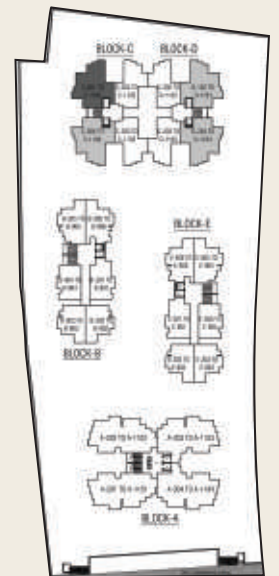
Key Plan

Carpet Area(sq.ft)	Wall Area(sq.ft)	Balcony Area(sq.ft)	Builtup Area(sq.ft)	Super Builtup Area(sq.ft)
862.61	63.62	102.14	1028.37	1326.6

3 BHK Unit Plan



Typical Floor (2nd to 11th Floor)



Key Plan

Carpet Area(sq.ft)	Wall Area(sq.ft)	Balcony Area(sq.ft)	Builtup Area(sq.ft)	Super Builtup Area(sq.ft)
1112.23	88.38	129.05	1329.66	1715.26

3 BHK Duplex (Type-A) Unit Plan with Servant Room

Blocks B & E

Typical Floor (3/5/7/9th Floor)

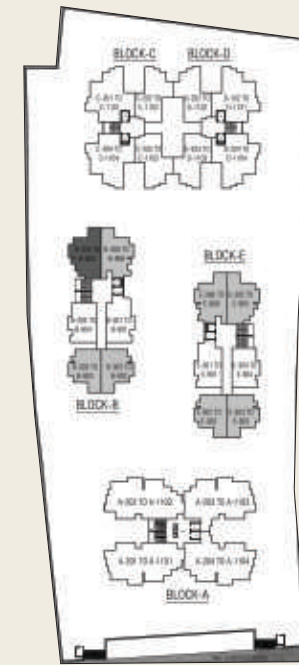


B-305

(Lower Level Plan)



(Upper Level Plan)



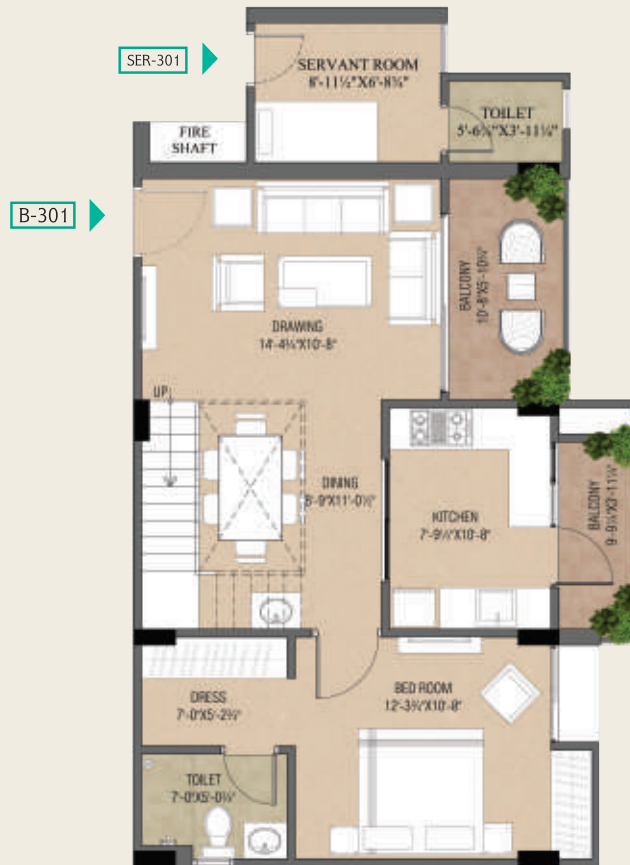
Key Plan

Carpet Area(sq.ft)	Wall Area(sq.ft)	Balcony Area(sq.ft)	Builtup Area(sq.ft)	Super Builtup Area(sq.ft)
1379.17	121.2	247.78	1748.15	2255.11

3 BHK Duplex (Type-B) Unit Plan with Servant Room

Blocks B & E

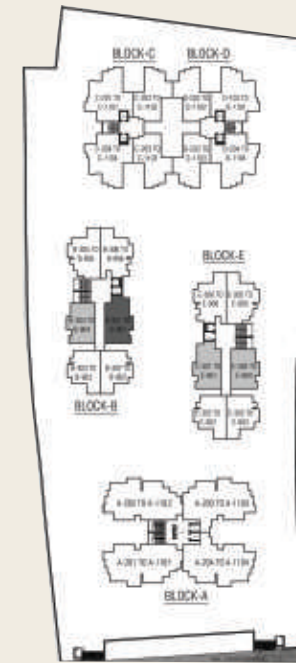
Typical Floor (3/5/7/9th Floor)



(Lower Level Plan)



(Upper Level Plan)



Key Plan

Carpet Area(sq.ft)	Wall Area(sq.ft)	Balcony Area(sq.ft)	Builtup Area(sq.ft)	Super Builtup Area(sq.ft)
1372.5	124.64	197.73	1694.87	2186.38



Ariana is a Pre-Certified Platinum Rated Green Building



Better lighting & ventilation • Healthier living • Reduced water usage
Significant electricity saving • Low maintenance costs • Lower carbon footprint
Pride of living in Green Building • Better rental/resale value



Location - Drive within 15 minutes to:



- Jaipur Airport (Jawahar Circle)
- Tonk Road
- JLN Marg
- Leading Super Market
- Gaurav Tower & World Trade Park
- Five-star Hotels
- Public Sector Banks
- Fortis & EHCC Hospitals
- Leading schools & colleges
- Food Outlets



Disclaimer : The illustrations shown in the brochure are artist's impressions & serve only to give an approximate idea of the project. All impressions & plans are subject to amendments as may be required for the betterment of the project allowed within the laws.



TRIMURTY LANDCON

601, Geeta Enclave, G-8, Vinobha Marg, C-Scheme, Jaipur
T: +91 141 2374451/5107100 | F: +91 141 2372359
E: ariana@trimurty.com | W: www.trimurty.com
For Booking Contact : 9509500800



/TrimurtyBuilders



/TrimurtyBuilders